



Elisha Bright Opoku (Autor)

Detection of viruses of the virome affecting birches (*Betula sp.*) - "Case studies Europe-wide"

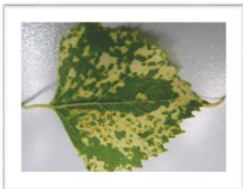
Berliner ökophysiologische
und phytomedizinische Schriften



Elisha Bright Opoku

Band 53

Detection of viruses of the virome
affecting birches (*Betula sp.*) –
"Case studies Europewide"



Cuvillier Verlag Göttingen
Internationaler wissenschaftlicher Fachverlag

<https://cuvillier.de/de/shop/publications/8773>

Copyright:

Cuvillier Verlag, Inhaberin Annette Jentsch-Cuvillier, Nonnenstieg 8, 37075 Göttingen,
Germany

Telefon: +49 (0)551 54724-0, E-Mail: info@cuvillier.de, Website: <https://cuvillier.de>

Table of content

1	Introduction	12
2	Materials and methods	13
2.1	Survey of selected <i>Betula</i> stands -Berlin-Germany	13
2.2	<i>Betula</i> sp. from Wilberg/Nagold seed plantation-Germany	15
2.3	Selected <i>Betula</i> stands from Rovaniemi-Finland	15
2.4	RNA isolation from plant material (Boom <i>et al.</i> , 1990)	17
2.4.1	Quantitative measurement of RNA concentration	17
2.4.2	Qualitative evaluation of RNA	18
2.5	Reverse transcription (cDNA synthesis)	19
2.5.1	Quality control of cDNA	21
2.6	Oligonucleotides (Primers)	23
2.6.1	Primer design for viral signatures	23
2.7	Polymerase chain reaction (PCR)	24
2.7.1	RT-PCR method for detection of CLRV	24
2.7.2	Detection of BLRaV by RT-PCR	25
2.7.3	RT-PCR method for BiCV detection	25
2.7.4	Detection of ApMV by RT-PCR	25
2.7.5	Partial Benyvirus-like sequence	25
2.7.6	Birch Capillovirus-like sequence	26
2.7.7	Caulimoviridae-like sequences in birch different from BLRaV	26
2.7.8	Signatures of Deltapartitivirus-like sequence in birch	26
2.8	Agarose gel electrophoresis	27
2.9	Sanger sequencing of PCR products	28
2.10	Double Antibody Sandwich -Enzyme -linked immunosorbent assay (DAS-ELISA)	30
2.11	Bioassays	32
2.12	High-throughput sequencing (HTS) diagnostics	32
2.12.1	Sampling	32
2.12.2	Purification, precipitation, concentration of RNA	33
2.12.3	Removal of rRNA from totalRNA	35
2.12.4	Ds cDNA generation	35
2.13	Bioinformatics including genomic database analysis- (NCBI)	36
2.13.1	De novo assembly and mapping to reference sequences	36

2.13.2 Database analysis for integrated form of BLRaV	38
2.13.3 Nucleotide collection (nr/nt)	38
2.13.4 Whole genome shotgun (WGS)	38
3 Results	41
3.1 Symptomatology in birches of selected stands	41
3.1.1 <i>Betula</i> leaf symptoms -Berlin -German	41
3.1.2 Leaf symptoms from <i>Betula</i> stands-Wildberg-Nagold-Germany	42
3.1.3 HTS in correlation to <i>Betula</i> leaf symptoms-Wildberg-Nagold	44
3.1.4 <i>Betula</i> leaf symptoms-Rovaniemi-Finland	44
3.2 Results of RNA extraction and RT-PCR	45
3.2.1 Separation of RNA by gel electrophoresis	46
3.2.2 Results of RT-PCR detecting the nad5 transcript in gel electrophoresis	46
3.2.3 Result of RT- PCR -BLRaV	46
3.2.4 BLRaV and CLRV detection in <i>C. quinoa</i>	48
3.2.5 Result of RT- PCR - (CLRV)	49
3.2.6 Result of (BiCV) RT-PCR	49
3.2.7 Result of (ApMV) RT-PCR	50
3.2.8 Gel electrophoresis of PCR for partial Benyvirus-like sequence	50
3.2.9 Birch Capillovirus-like sequence -RT- PCR	51
3.2.10 Birch Caulimovirus-like sequence-RT- PCR	51
3.2.11 Birch Deltapartitivirus-like sequence -RT-PCR	52
3.3 Detection of plant viruses infecting <i>Betula</i> sp. in Berlin	53
3.3.1 Single and mixed viral infection of <i>Betula</i> sp.	54
3.4 Detection of plant viruses infecting <i>Betula</i> sp.-Wildberg-Nagold	55
3.5 Detection of plant viruses infecting <i>Betula</i> sp.-Rovaniemi -Finland	56
3.6 Serological results	58
3.7 Database analysis of the <i>Betula</i> genome-NCBI	58
3.8 Biodiversity of plant viruses in <i>Betula</i> sp. - Whole genome shotgun (WGS)	59
3.8.1 Quest for integration of BLRaV-like sequence in database of <i>Betula</i>	61
3.8.2 Capillovirus-like sequence in the genome database of <i>Betula</i>	62

4 Discussion	70
4.1 Selected <i>Betula</i> Stands-Berlin-Germany	74
4.2 Single and mixed infection of plant viruses detected by RT-PCR	77
4.3 Selected leaf symptoms from <i>Betula</i> stands -Wildberg/Nagold -German	80
4.4 Selected <i>Betula</i> stand -Rovaniemi -Finland	82
4.5 RT-PCR detection of plant viruses	82
4.5.1 <i>Birch leaf roll associated virus</i> (BLRaV)	86
4.5.2 <i>Cherry leaf roll virus</i> (CLRV)	88
4.5.3 <i>Birch carlavirus</i> (BiCV)	89
4.5.4 <i>Apple mosaic virus</i> (ApMV)	90
4.5.5 Partial Benyvirus-like signature	91
4.5.6 Birch Capillovirus- like sequence	93
4.5.7 Birch Caulimovirus -like sequence	95
4.5.8 Birch Deltapartitivirus-like sequence	96
4.6 Bioassay	97
4.7 Serological methods (DAS-ELISA)	99
4.8 Database analysis of the <i>Betula</i> genome-NCBI	101
4.8.1 Genomic analysis of Capillo-like virus sequence alignment	101
5 Badnaviruses state of the art	103
5.1 Symptomology, host range and mode of transmission	105
5.2 Geographical distribution of badnaviruses	106
5.3 Genomic organization and life cycle of badnaviruses	108
5.4 Current diagnostic methods for detection of badnaviruses	110
6 Summary	112
7 Zusammenfassung	114
8 References	139
9 List of figures	145
10 List of tables	147
11 Appendix	148
11.1 List of Abbreviation	150
11.2 Chemicals	150
11.3 Tables	163
11.4 Figures	166

12 Acknowledgement	170
13 Declaration of independence	171