



Patrick Levin (Autor)

Designing the Internal Porous Structure of Soluble Coffee Particles to Improve Freeze-Drying and Functionality



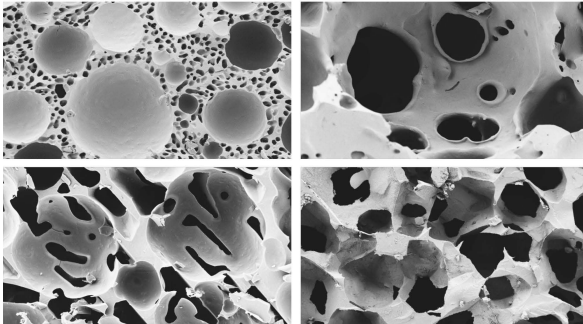
SPE-Schriftenreihe

22

Herausgegeben von Prof. Dr.-Ing. habil. Dr. h.c. Stefan Heinrich

Patrick Marc Wayne Levin

Designing the Internal Porous Structure of Soluble Coffee Particles to Improve Freeze-Drying and Functionality



Cuvillier Verlag Göttingen
Internationaler wissenschaftlicher Fachverlag

<https://cuvillier.de/de/shop/publications/8744>

Copyright:

Cuvillier Verlag, Inhaberin Annette Jentzsch-Cuvillier, Nonnenstieg 8, 37075 Göttingen, Germany

Telefon: +49 (0)551 54724-0, E-Mail: info@cuvillier.de, Website: <https://cuvillier.de>

Contents

Acknowledgements	I
Abstract	I
Zusammenfassung	II
Symbols	VII
1 Introduction	1
1.1 The structure of instant coffee	1
1.2 The process of soluble coffee production	2
1.3 Freezing of concentrated solutions	3
1.3.1 Physics and structure of crystals	4
1.3.2 Crystallization in scraped surface heat exchangers	4
1.3.3 Hardening, crystal growth and recrystallization	6
1.4 Foaming of concentrated solutions	7
1.4.1 Physics and structure of foams	8
1.4.2 Foaming process	10
1.4.3 Influence of surfactants on the foaming process	11
1.5 Freeze-drying of bulk materials	11
1.5.1 State diagram and freeze-drying process	12
1.5.2 Heat and mass transfer	16
1.5.3 Model approaches	18
1.6 Reconstitution of food powders	19
2 Methodology	22
2.1 Materials	22
2.2 Crystallization processes	23
2.2.1 Setup of a scraped surface heat exchanger	23
2.2.2 Hardening of the slurry	24
2.3 Foaming processes	25
2.3.1 Foam formation by high shear mixing	26
2.3.2 Foam formation in the scraped surface heat exchanger	28

2.3.3	Determination of overrun and gas yield	29
2.4	Freeze-drying	30
2.4.1	Experimental equipment	30
2.4.2	Preparation of material before freeze-drying	32
2.4.3	Experimental design	32
2.4.4	Modeling Software	34
2.5	Reconstitution	35
2.5.1	Experimental setup	35
2.5.2	Procedure	35
2.6	Characterization and analysis methods	36
2.6.1	Surface Tension	36
2.6.2	Density	37
2.6.3	Viscosity	37
2.6.4	Melting temperature	37
2.6.5	Heat capacity, glass transition and the onset of melting	38
2.6.6	Pore structure and porosity	39
2.6.7	Particle size distribution	40
2.6.8	Thermal conductivity	41
2.6.9	Sorption isotherm	41
2.6.10	Tensile strength	42
3	Results and Discussion	43
3.1	Crystallization process	43
3.1.1	Characterization of coffee solutions	44
3.1.2	The pore size of ice crystal structures	46
3.1.3	Recrystallization over time	52
3.2	Foaming process	54
3.2.1	Surface tension of highly concentrated coffee solutions	54
3.2.2	Experiments using high shear mixing	55
3.2.3	Influence of overrun and surfactants on pore structure	60
3.3	Crystallization and foam formation in the SSHE	63
3.3.1	Overrun and gas yield	63
3.3.2	Freezing rates	65
3.3.3	Structure formation	66
3.4	Drying Kinetics	73
3.4.1	Validation of measurement setup	74
3.4.2	Onset of glass transition and melting	75
3.4.3	Influence of ice crystal structure on drying kinetics	76

3.4.4	Influence of gassed frozen samples on drying kinetics	76
3.5	Modeling of freeze-drying as a function of the structure	83
3.5.1	Determination of material properties	83
3.5.2	Model setup	85
3.5.3	Validation of the model	90
3.5.4	Sensitivity analysis	95
3.6	Influence of internal structure on product quality	101
3.6.1	Reconstitution of coffee particles	101
3.6.2	Influence of structure on mechanical strength	108
3.6.3	Influence of structure on color	110
4	Conclusion	114
4.1	Structure building of highly concentrated coffee solutions	114
4.2	Drying kinetics as a function of the internal porous structure	115
4.3	Modeling of freeze-drying kinetics	116
4.4	Reconstitution kinetics as a function of the internal porous structure . . .	117
4.5	Summary	117
	Bibliography	119
	Appendix A	129
	Appendix B	131
	Appendix C	133