



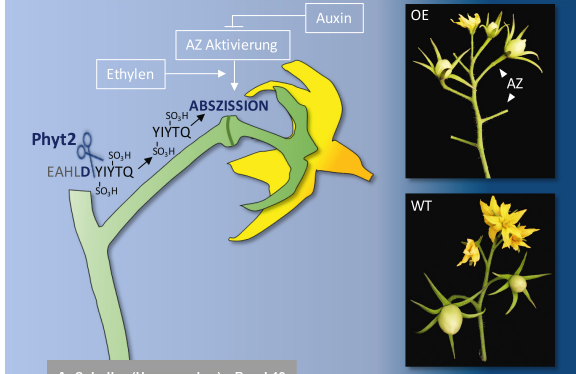
Sven Reichardt (Autor)

# Aspartat-spezifische Subtilasen in der Steuerung von Zelltod, Abwehrreaktionen und Entwicklungsprozessen in *Solanum lycopersicum*



UNIVERSITÄT  
HOHENHEIM

Schriftenreihe zur Physiologie und Biochemie der Pflanzen



A. Schaller (Herausgeber) - Band 13

**Sven Reichardt**

Aspartat-spezifische Subtilasen in der Steuerung von Zelltod, Abwehrreaktionen und Entwicklungsprozessen in *Solanum lycopersicum*



Cuvillier Verlag Göttingen

[www.uni-hohenheim.de](http://www.uni-hohenheim.de)

<https://cuvillier.de/de/shop/publications/8121>

Copyright:

Cuvillier Verlag, Inhaberin Annette Jentsch-Cuvillier, Nonnenstieg 8, 37075 Göttingen, Germany

Telefon: +49 (0)551 54724-0, E-Mail: [info@cuvillier.de](mailto:info@cuvillier.de), Website: <https://cuvillier.de>



# Inhaltsverzeichnis

|   |             |
|---|-------------|
| <b>ABBILDUNGSVERZEICHNIS .....</b>  | <b>XI</b>   |
| <b>TABELLENVERZEICHNIS .....</b>  | <b>XIII</b> |
| <b>ABKÜRZUNGSVERZEICHNIS.....</b>   | <b>IX</b>   |
| <b>ZUSAMMENFASSUNG .....</b>  | <b>XII</b>  |
| <b>SUMMARY.....</b>   | <b>XIV</b>  |
| <b>1 EINLEITUNG .....</b>   | <b>1</b>    |
| <b>1.1 KLASIFIZIERUNG UND PHYLOGENIE VON SUBTILASEN.....</b>  | <b>1</b>    |
| <b>1.2 CHARAKTERISTISCHE PRÄPROTEIN-STRUKTUR DER SUBTILASEN .....</b>   | <b>4</b>    |
| <b>1.3 PFLANZEN-SUBTILASEN MIT BEKANNTEN SUBSTRATEN.....</b>  | <b>5</b>    |
| <b>1.4 REGULATORISCHE PFLANZEN-SUBTILASEN MIT UNBEKANNTEN SUBSTRATEN .....</b>  | <b>13</b>   |
| <b>1.5 ZIELE DER ARBEIT .....</b>   | <b>19</b>   |
| <b>2 ERGEBNISSE .....</b>   | <b>21</b>   |
| <b>2.1 THE TOMATO SUBTILASE FAMILY INCLUDES SEVERAL CELL DEATH-RELATED<br/>        PROTEINASES WITH CASPASE SPECIFICITY .....</b> | <b>21</b>   |
| 2.1.1 Abstract .....  | 22          |
| 2.1.2 Introduction .....  | 23          |
| 2.1.3 Results .....   | 25          |
| 2.1.3.1 Characterization of the tomato SBT family and identification of phytaspases. ....   | 25          |
| 2.1.3.2 Cleavage specificity of tomato phytaspases .....  | 28          |
| 2.1.3.3 Cell death-inducing activity of tomato phytaspases .....  | 32          |
| 2.1.3.4 Tissue-specific expression of tomato phytaspases .....  | 34          |
| 2.1.4 Discussion .....  | 36          |
| 2.1.5 Methods.....  | 39          |
| 2.1.5.1 Phylogenetic analysis .....   | 39          |
| 2.1.5.2 Cloning of SBTs for transient expression and tomato transformation .....  | 39          |
| 2.1.5.3 Transient expression in <i>N. benthamiana</i> and purification of SBTs.....   | 40          |
| 2.1.5.4 Substrate specificity of tomato phytaspases .....   | 40          |
| 2.1.5.5 Analysis of cell death in tomato plants after transient expression of <i>S/Phyts</i> .....                                | 41          |
| 2.1.5.6 Analysis of cell death in transgenic tomato plants expressing <i>S/Phyts</i> .....  | 41          |



|            |   |           |
|------------|---|-----------|
| 2.1.5.7    | Expression analysis by quantitative Reverse Transcriptase (qRT)-PCR. ....                                 | 42        |
| 2.1.5.8    | Statistical analysis. ....  | 42        |
| 2.1.6      | Supplementary data .....  | 43        |
| 2.1.6.1    | Nomenclature of P69 subtilases .....  | 43        |
| 2.1.6.2    | Supplementary Tables .....  | 44        |
| 2.1.6.3    | Supplementary Figure .....  | 46        |
| <b>2.2</b> | <b>PHYTASPASE MEDIATED PRECURSOR PROCESSING AND MATURATION OF THE WOUND HORMONE SYSTEMIN.....</b>         | <b>47</b> |
| 2.2.1      | Abstract .....  | 48        |
| 2.2.2      | Introduction .....  | 49        |
| 2.2.3      | Materials and Methods .....   | 50        |
| 2.2.3.1    | Purification of tomato phytaspase .....   | 50        |
| 2.2.3.2    | Activity assay and substrate specificity of tomato phytaspase.....  | 51        |
| 2.2.3.3    | Plasmid construction and plant transformation .....   | 51        |
| 2.2.3.4    | Production and purification of recombinant proteins.....  | 52        |
| 2.2.3.5    | PS hydrolysis by tomato phytaspases.....  | 53        |
| 2.2.3.6    | <i>Proteinase inhibitor II (PI-II)</i> gene expression assay in tomato plants.....                        | 53        |
| 2.2.3.7    | Mass spectrometry analyses .....  | 54        |
| 2.2.3.8    | Cell culture and pH response measurements.....  | 55        |
| 2.2.4      | Results .....   | 55        |
| 2.2.4.1    | The rationale for choosing phytaspase as a candidate for PS processing.....                               | 55        |
| 2.2.4.2    | Characterization of tomato phytaspase.....  | 56        |
| 2.2.4.3    | Phytaspase mediated fragmentation of prosystemin <i>in vitro</i> .....                                    | 58        |
| 2.2.4.4    | Signaling activity of Leu-systemin.....   | 60        |
| 2.2.4.5    | Functional relevance of prosystemin processing.....   | 61        |
| 2.2.5      | Discussion .....  | 65        |
| 2.2.6      | Supplementary data .....  | 68        |
| <b>2.3</b> | <b>PHYTASPASE 2 IS NOT INVOLVED IN WOUND SIGNALING BUT RATHER CONTROLS TRICHOME HEAD ABSCISSION .....</b> | <b>73</b> |
| 2.3.1      | Abstract .....  | 74        |
| 2.3.2      | Introduction .....  | 75        |
| 2.3.3      | Methods.....  | 76        |
| 2.3.3.1    | Plant material and growth conditions.....   | 76        |
| 2.3.3.2    | Caterpillar feeding bioassays .....   | 77        |
| 2.3.3.3    | Cloning of Phyt 2-His .....   | 77        |
| 2.3.3.4    | Transient expression of Phyt 2-His in <i>N. benthamiana</i> and purification .....                        | 78        |
| 2.3.3.5    | Cloning the hairpin (hp) construct .....  | 78        |



## Inhaltsverzeichnis

|            |   |            |
|------------|---|------------|
| 2.3.3.6    | Expression analysis by quantitative Reverse Transcriptase (qRT)-PCR. ....                             | 79         |
| 2.3.3.7    | Cloning of promotor-reporter gene (GUS) construct.....  | 80         |
| 2.3.3.8    | Histochemical Staining for GUS Activity.....  | 80         |
| 2.3.3.9    | Harvest of glandular trichome heads.....  | 81         |
| 2.3.3.10   | Metabolite profiling.....   | 81         |
| 2.3.4      | Results.....  | 82         |
| 2.3.4.1    | <i>In vitro</i> release of systemin using purified Phytaspase 2 .....                                 | 82         |
| 2.3.4.2    | <i>In vivo</i> function of Phyt 2 in the systemin-mediated defense response.....                      | 83         |
| 2.3.4.3    | Phyt 2 overexpression impairs the survival of early-instar <i>S. exigua</i> caterpillars.....         | 85         |
| 2.3.4.4    | Abscission of trichome heads correlates with Phytaspase 2 expression levels .....                     | 88         |
| 2.3.4.5    | Enhanced Phytaspase 2 expression leads to a stronger axillary bud outgrowth.....                      | 91         |
| 2.3.5      | Discussion .....  | 93         |
| <b>2.4</b> | <b>PEPTIDE SIGNALING FOR DROUGHT-INDUCED FLOWER DROP IN TOMATO .....</b>                              | <b>96</b>  |
| 2.4.1      | Abstract .....  | 97         |
| 2.4.2      | Results and Discussion.....   | 98         |
| 2.4.3      | Conclusions .....   | 104        |
| 2.4.4      | Materials and Methods .....   | 106        |
| 2.4.4.1    | Plant materials and growth conditions .....   | 106        |
| 2.4.4.2    | Abscission bioassays.....   | 106        |
| 2.4.4.3    | Transgenic tomato plants .....  | 107        |
| 2.4.4.4    | Promoter::reporter gene analysis.....   | 107        |
| 2.4.4.5    | Transient expression and purification of <i>S</i> /Phyt 2.....  | 108        |
| 2.4.4.6    | Substrate specificity of <i>S</i> /Phyt 2.....  | 108        |
| 2.4.4.7    | Mass spectrometric (MS) analysis of precursor peptide cleavage .....                                  | 109        |
| 2.4.4.8    | Quantitative RT-PCR analysis.....   | 109        |
| 2.4.4.9    | Statistical analyses.....   | 111        |
| 2.4.5      | Supplementary Material .....  | 112        |
| <b>3</b>   | <b>DISKUSSION .....</b>   | <b>119</b> |
| 3.1        | <b>EXPANSION DER SUBTILASE-FAMILIE, EIN WICHTIGER SCHRITT IN DER EVOLUTION DER LANDPFLANZEN .....</b> | <b>119</b> |
| 3.2        | <b>PSK EIN SUBSTRAT FÜR ASPARTAT-SPEZIFISCHE SUBTILASEN.....</b>                                      | <b>130</b> |
| 3.3        | <b>PSK-ABHÄNGIGE ABSZISSION – ÜBERTRAGBAR AUF WEITERE ABSZISSIONSPROZESSE? .....</b>                  | <b>134</b> |
| 3.4        | <b>REGULATION DES ACHSELKNOSPEN-AUSTRIEBES DURCH ASPARTAT-SPEZIFISCHE SUBTILASEN.....</b>             | <b>138</b> |
| 3.5        | <b>BETEILIGUNG VON PHYTASPASEN AN DER PSK-SIGNALISIERUNG.....</b>                                     | <b>140</b> |
| 3.6        | <b>ERGÄNZENDE DATEN .....</b>   | <b>142</b> |



|  |            |
|--|------------|
| <b>4 REFERENZEN</b> .....                    | <b>151</b> |
| <b>ANLAGEN</b> .....                         | <b>A</b>   |
| <b>DANKSAGUNG</b> .....                      | <b>A</b>   |
| <b>EIDESSTATTLICHE VERSICHERUNG</b> .....    | <b>B</b>   |
| <b>PERSÖNLICHE DATEN (LEBENS LAUF)</b> ..... | <b>C</b>   |